

Supine Bariatric Support

A 2-piece wedge cushion set to elevate the head and thorax in the supine position, reducing pressure and facilitating intubation.

- + Helps to easily reach the optimal intubation position by raising the head, upper body and shoulders above the chest (“ramped position”)
- + Can also be ordered separately
- + Fully sealed for a better cleaning
- + Fully Radiolucent
- + Maximum Weight: 250kg

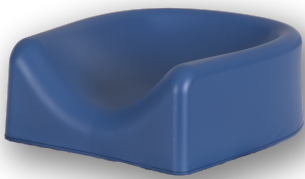


Supine Bariatric Support

Code: CSM-2961 CS Supine Bariatric Support (Set)
(Includes Top, Base & Head Support) Qty: 1

Code: CSM-2648 CS Supine Bariatric Support - Top & Base Qty: 1

Our recommended addition:



Supine & Lateral Head Support

Code: CSM-2643
Qty: 1 Unit

